



An Exelon Company

Community Information

ComEd Chicago North Office Demolition

Chicago North Office Demolition

THE PROJECT

ComEd is preparing for demolition of the Chicago North facility at 3500 North California Ave.

BACKGROUND

The Chicago North office building was constructed in the 1930s to enable ComEd to provide safe and reliable energy for its customers. The building is no longer suitable for occupants and plans to demolish the building are underway.

A structure has been built to replace the old Chicago North building which will provide ComEd staff and the community a more sustainable space to work and learn. The new building includes a visitor space dedicated to promoting science, technology, engineering, and math (STEM) learning. The new facility harnesses clean, renewable energy through a solar panel array and has been LEED Certified.

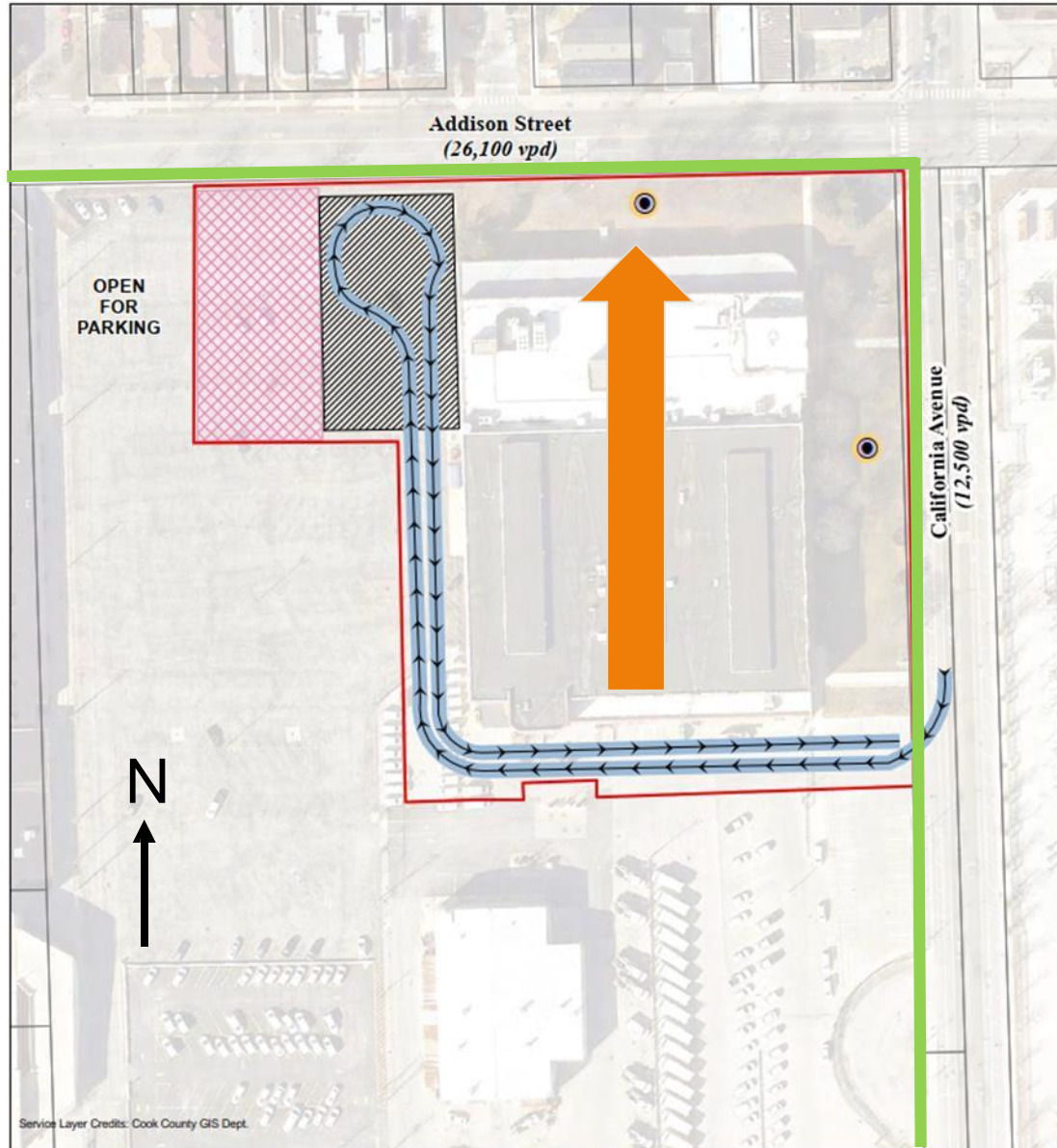


- **Air Quality:** Dust Suppression measures will be employed throughout demolition activities. Air quality will be monitored along the site boundaries to protect the neighboring community.
- **Traffic Control Measures:** Trucks will be staged on-site, not on adjacent streets. Route selection has been made to minimize impact on traffic along North California Avenue and West Addison Street.
- **Access Control:** Public access to the work zone will be restricted using a perimeter fence to prevent pedestrians from getting too close to the work zone.
- **Project Schedule:** Work hours will typically be Monday through Friday 8:00am to 6:00pm.
- **No implosions:** No implosion demolition methods will be used.
- **Communication:** Community information like this is intended to share project information with the public and to answer questions. Please contact External Affairs Manager Lizbeth Ramirez at (773) 306-8436 if you have any additional questions.






Community Safety is our # 1 Priority



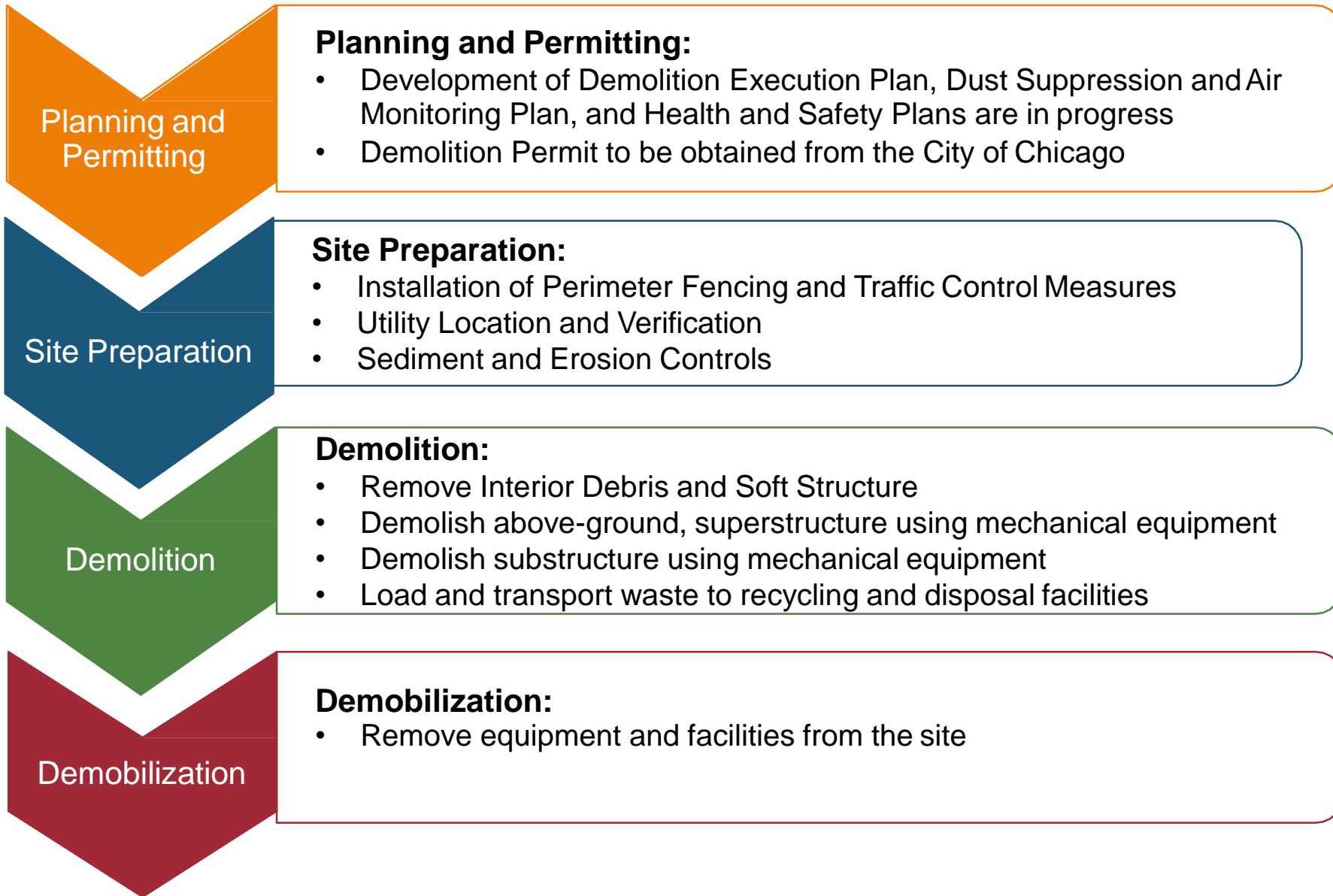
Site Figure



LEGEND

-  Work Zone Perimeter Fencing
-  Air Quality Monitoring Stations
-  Pedestrian sidewalk (to stay open)
-  Recycling and Disposal Truck Route
-  Demolition Progression Direction

Project Sequence



Demolition Work Description

Demolition

Interior debris and soft structure will be removed and disposed of offsite

Remove
Interior Debris
and Soft
Structure



Demolition Work Description

Demolition

Demolition to be completed using hydraulic excavators (e.g., Caterpillar 329, Caterpillar 349 and Volvo 750). No implosion methods will be used.

Demolish
above-ground
structure
using
mechanical
equipment



Demolition

Demolish
above-ground
structure
using
mechanical
equipment

Dust Suppression and Air Monitoring

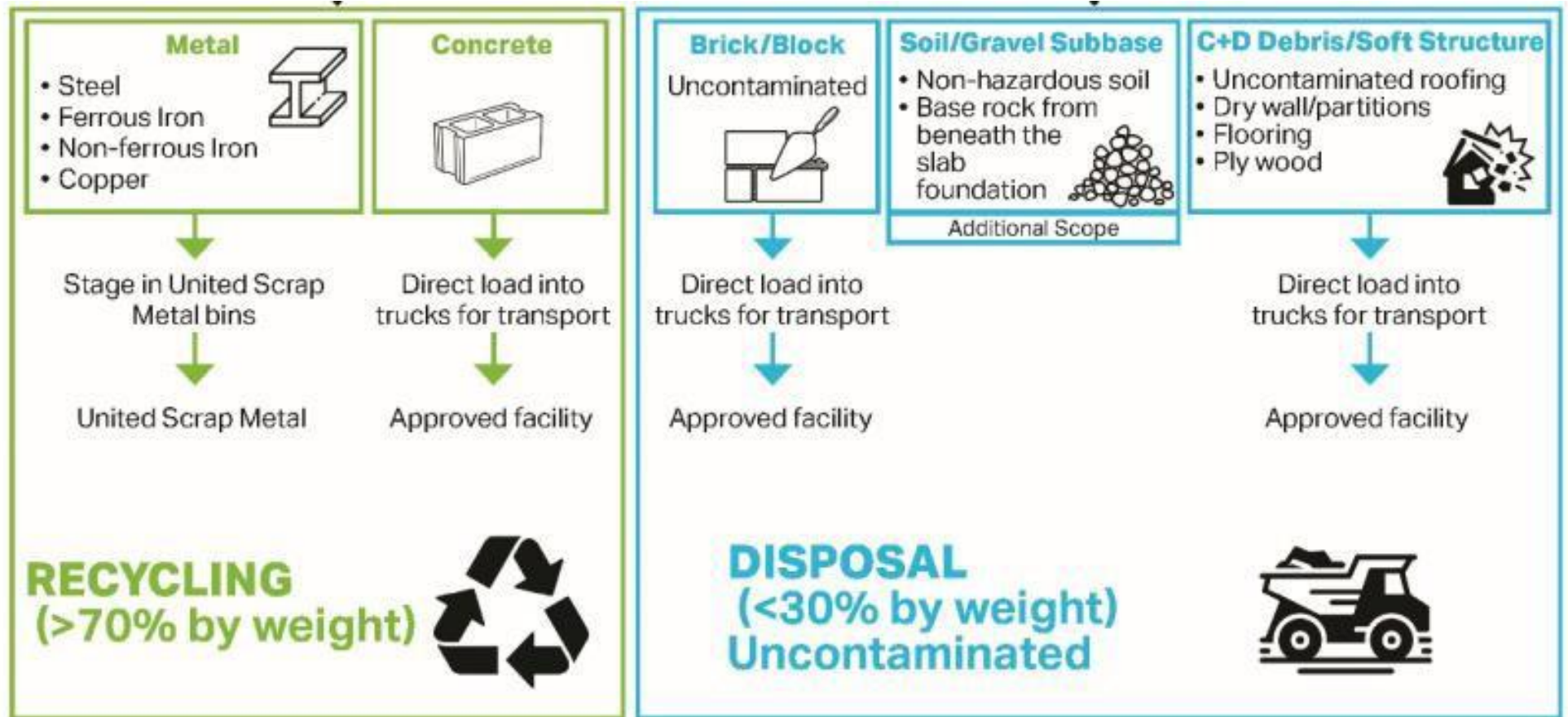
- **Dust Suppression Method:** Water will be used for mass dust suppression during demolition activities and, as needed, a fire hose will be used by a laborer for acute, localized dust suppression.
- **Dust Suppression Equipment:** Dust boss (as shown in photo) and fire hose.
- **Air Monitoring:** Air quality will be monitored along the site boundaries to protect neighboring communities.
- **Trucking:** Trucks will be inspected for loose debris and soil before exiting the Site to keep streets clean and free of dust. Street sweeping will be employed, as needed, if visible debris and/or soil is tracked onto the adjacent street.

Demolition Work Description

Demolition

Demolition waste to be recycled (>70%) or disposed of offsite

Load and transport waste to recycling and disposal facilities



Proposed Schedule of Work Activities

Task Name	June	July	August	September	October	November	December
Planning and Permitting							
Site Preparation							
Demolition							
<i>Superstructure Demolition</i>							
<i>Substructure Demolition</i>							
Demobilization							

- Project Schedule assumes demolition will commence on August 18, 2020.